



**CASTLEBRECK INC.**  
KNIGHTS OF COLLABORATION

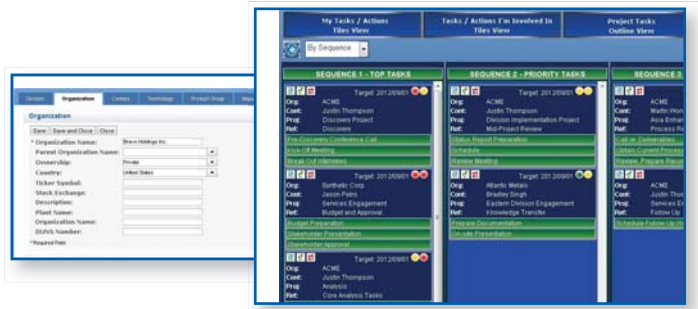
**CRM FOR  
WEBSPHERE  
PORTAL**



**CASTLEBRECK  
COLLABORATIVE  
SOLUTIONS**



## THE PRODUCT: CRM FOR WEBSPHERE PORTAL



- Contact and Organization Management
- Profiling
- Opportunity Management and Sales Forecasting
- CBCS Action Center: Project / Task / Activity Management
- Data Import / Export / Synchronization to and from anything
- Mapping
- Mass Marketing—email blasts and mailing lists



## THE TECHNOLOGY: CUSTOMIZE AND BUILD YOUR OWN APPS

Castlebreck Collaborative Solutions (CBCS) is a complete technology stack that delivers a rich Ajax user interface providing incredible performance and fidelity. This dynamic SOA solution sits on top of your corporate databases, and provides a complete stack to surface and manage your data

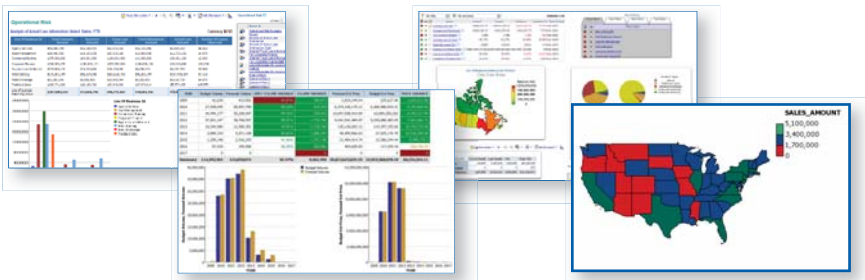
in a Websphere Portal or Websphere web application environment.

Extend the solution by creating new entities corresponding to database tables in any database.

Use the technology to build your own applications.



## BUSINESS INTELLIGENCE: POWERED BY IBM COGNOS BI



Castlebreck Collaborative Solutions Business Intelligence is a full business intelligence suite powered by IBM Cognos BI.

Visualize your data and make better business decisions.



## SYSTEM REQUIREMENTS: WORKS WITH WHAT YOU OWN

Operating Systems: Linux, IBM i, AIX, Windows Server

Databases: DB2, Oracle, MS SQL Server